



**STATEWIDE**

HOME HEALTH CARE



**PRESSURE CARE CUSHIONS**

Your home. Your health. We care.

# PRESSURE RELIEVING PRODUCTS

## ROHO MEDICAL PRODUCTS

It's only air, but what we do with it makes a world of difference. There are no greater defences against wounds and diseases than those found in the human body. But often these defences need an ally. A partner in the healing process. ROHO DRY FLOATATION technology is that partner. The soft, flexible, interconnected air cells that comprise ROHO DRY FLOATATION products are adjustable to provide a customised fit to a client's sitting or lying shape. As an individual's body shape changes, the cushion adjusts to facilitate blood flow.



Scan here to learn more!



60Q59

Low Profile



Scan here to learn more!

### QUADTRO SELECT CUSHION

The QUADTRO SELECT Cushion allows every user to benefit from a customised fit. The revolutionary ISOFLO® Memory Control offers shape fitting capabilities while the user is seated, allowing quick and easy on-demand adjustment to maximise function.

**Available in High and Low Profile**



60HAR

### THE HARMONY CUSHION

By combining a lightweight and comfortable ROHO® AIR FLOATATION Cushion Overlay with a pre-contoured foam base, encased within a moisture resistant cover, you can maximise abilities, independence and freedom without the worry of adding unnecessary weight to the mobility system.



60LTV

### THE LTV SEAT CUSHION

The LTV Cushion lets you customise the seat to your specific comfort level. The LTV is made of individual, interconnected air cells that allow air to slowly transfer from chamber to chamber and evenly distribute body weight pressure.



60MOS

### THE MOSAIC CUSHION

The MOSAIC cushion is especially suited for users who require a cushion for basic level skin protection, support and comfort. Using air floatation technology, the MOSAIC cushion allows it to be used effectively for low risk skin protection.

## MATTRESS OVERLAY

High quality air mattress overlay system divided into four sections (ROHO or Foam) suit individual user requirements. Mattress sections are easily fastened together by press studs. Cells are interconnected and their unique shape promote blood circulation to facilitate pressure prevention, healing and relief. Air pressure is adjustable and can be customized to suit the user.



60-MATTSYS

# PRESSURE RELIEVING PRODUCTS



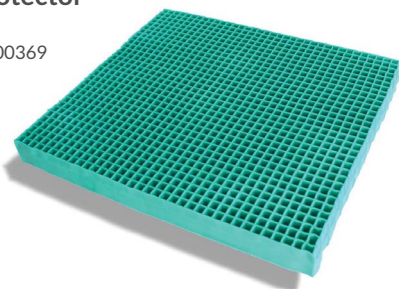
The Pressure Relieving EquaGel Medical Cushion is made from durable, patented column-buckling gel technology.

This design spreads body load by reducing contact area and increasing air circulation, which helps dispel heat and moisture. EquaGel seat cushions are non-inflatable and require no adjustment or ongoing maintenance. All cushions come with a fluid-resistant, vapour-permeable cover.

## The Equagel Protector

16" x 16"
16" x 18"
18" x 16"
18" x 18"
20" x 16"
20" x 18"
22" x 16"
22" x 18"

600369

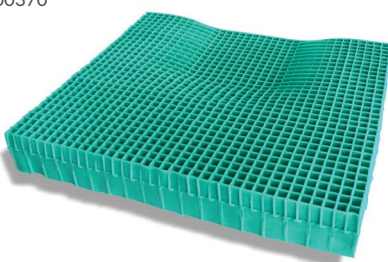


- 100% EquaGel®
- 6.35cm tall EquaGel® in two stages
- Contoured pelvic area of the cushion for additional equalising pressure distribution while maintaining 4.5cm gel below pressure points

## The Equagel General

16" x 16"
16" x 18"
16" x 20"
18" x 16"
18" x 18"
18" x 20"
20" x 16"
20" x 18"
20" x 20"

600370

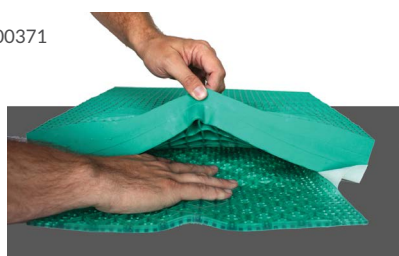


- 100% Equagel
- 5.08cm (2") tall EquaGel
- The pelvic area of the cushion is contoured to more evenly distribute a user's weight than other cushions while retaining 3.17cm (1.25") of buckling gel under the pressure points
- Fluid resistant, vapour permeable, flame resistant cover

## The Equagel Adjustable

16" x 16"
16" x 18"
18" x 16"
18" x 18"
20" x 16"
20" x 18"
22" x 16"
22" x 18"

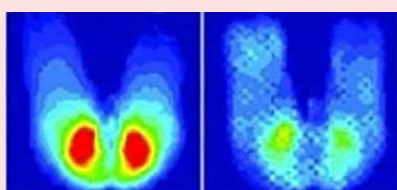
600371



- 100% EquaGel®
- 6.35cm tall EquaGel® in two stages equalising pressure distribution while maintaining 4.5cm gel below pressure points
- Included are two different pelvic contour inserts that increase the amount of therapeutic gel under the pelvis

## PRESSURE MAPPING TESTING

A side-by-side comparison of the average pressure mapping readings of the same user demonstrates a pattern of excellence in EquaGel cushions. Even comparing the non-adjustable EquaGel cushions to a premium brand adjustable air cushion, properly adjusted, demonstrates superior performance - as much as 12.4% lower average pressure, 14.3% lower peak pressure, and up to 5.3% greater weight distribution area.



It should be noted that these results hold generally true with a majority of user body types according to tests, but EquaGel does not guarantee these outcomes for every user. A trained professional should analyse the needs of pressure-sensitive users on an individual basis and discover the correct cushion to use in each individual case.

# WHEELCHAIR CUSHIONS



Vicair cushions utilise a unique air cell design that consists of multiple individual air filled cells. These cells work together to distribute the user's weight and pressure evenly across the cushion's surface. This helps to alleviate pressure points, reduce the risk of pressure ulcers and improve overall comfort.



60-OAD/10TP

## VICAIR ADJUSTER

The Vicair Adjuster O2 is a wheelchair cushion that helps prevent pressure ulcers. It is also a high quality addition to a pressure ulcer treatment plan (stage I-IV).

**This model is standard with 2 top covers.**

Scan here!



Both available in

16 x 16 x 4"	18 x 20 x 4"
16 x 18 x 4"	20 x 16 x 4"
16 x 20 x 4"	20 x 18 x 4"
18 x 16 x 4"	20 x 20 x 4"
18 x 18 x 4"	



60-OVR10/TP

## VICAIR VECTOR

The Vector cushion's unique compartment layout reduces pressure in vulnerable areas around the sitting bones and tailbone. The Vector O2 provides excellent leg guidance, optimal skin protection, and extra pelvic stability.

**This model is standard with 2 top covers.**

Scan here to learn more!



Designed to stabilise the pelvis, protect the skin and position the body, JAY's comprehensive range of wheelchair cushions are lightweight, low maintenance and can accommodate a wide range of mobility seating requirements.

## JAY UNION CUSHION



60JUNION

The JAY® Union™ is a versatile, comfortable, skin protection and positioning cushion composed of a dynamic fluid and foam layering system, moisture resistant inner cover, and an anti-microbial outer cover. JAY Flow fluid and memory foam for high performance skin protection and positioning

## JAY FUSION CUSHION



60JFUSION

The JAY® Fusion™ is an adjustable cushion designed for skin protection that features JAY Flow™ Fluid or ROHO DRY FLOATATION® air insert options in a package that's comfortable, stable and supportive. It incorporates the stability of the J3 cushion with the pressure management of J2.

Combines the J2's skin protection capabilities with the J3's maximum stability

## JAY J2 CUSHION



60J24

The JAY J2 cushion combines JAY foam, a JAY Flow fluid pad and various cover choices to provide outstanding comfort. The Jay J2 cushion is most suitable for clients who have moderate to aggressive postural needs, and require a high degree of skin protection.

Learn more about other popular products that may support your home health care journey.



**Statewide Home Health Care**  
909 Nepean Highway, Bentleigh 3204  
T. (03) 9591 6234 | [sales@shhc.com.au](mailto:sales@shhc.com.au) | [shhc.com.au](http://shhc.com.au)



Hire and sales also available on the Mornington Peninsula:

**Peninsula Home Health Care**  
21 Sir Laurence Drive, Seaford 3198  
T. 9786 7004 | [sales@phhc.com.au](mailto:sales@phhc.com.au) | [phhc.com.au](http://phhc.com.au)